



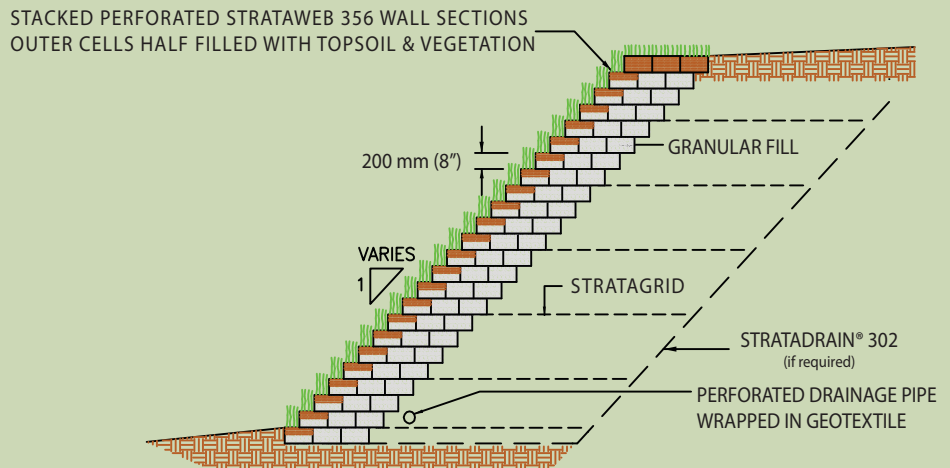
# StrataWeb<sup>®</sup>

Geogrid Reinforced Soil System with Geocell Fascia

- StrataWeb<sup>®</sup> HDPE Fascia
- StrataGrid<sup>®</sup> Reinforcement
- StrataTex<sup>®</sup> Geotextile
- Strata Design Support
- Strata Customer Service



## Hold Your Ground with the StrataWeb GRSS System

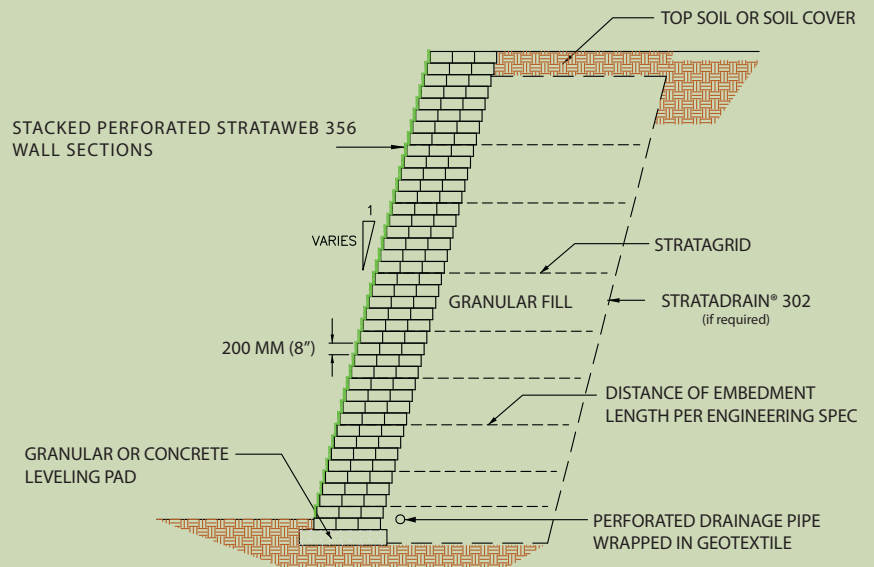


**STRATAWEB GRSS - Vegetated Slope**

# StrataWeb GRSS System

## Flexible Design Benefits of the Strata System

- **Integrated supplier/manufacturer**
- **Vertical Integration**
  - **Full System**
  - **Design**
  - **Reinforcement**
  - **Fascia**
- **Design Flexibility**
  - **Varied Batter**
  - **Vegetated or Hard Armor**
- **Single Support Source**
- **Everything comes on one truck**



**STRATAWEB GRSS - Retaining Wall**

StrataWeb Physical Properties	Units	Typical Value
<b>Nominal-Expanded Cell Size (WxL)</b>	mm (in)	259 (10.2) x 224 (8.8)
<b>Nominal-Expanded Cell Area</b>	cm <sup>2</sup> (in <sup>2</sup> )	289 (44.8)
<b>Nominal-Expanded Section (WxL)</b>	m (ft)	0.68 (2.22) x 2.56 (8.4)
<b>Nominal-Expanded Section Area</b>	m <sup>2</sup> (ft <sup>2</sup> )	1.74 (18.6)
<b>Cell Depth</b>	mm (in)	200 (8)
<b>Seem Peel Strength</b>	N (lbs)	2840 (640)

**SOURCE THE BEST SOLUTION  
CONTACT STRATA TODAY**

[www.geogrid.com](http://www.geogrid.com)